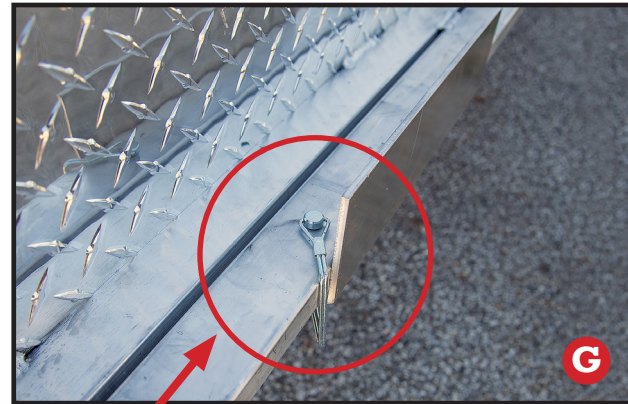


STEP 4



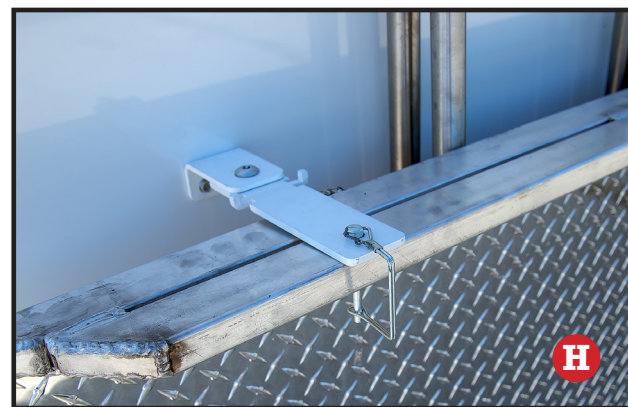
Center ADA ramp on Base with top side facing outward. See image **F**.



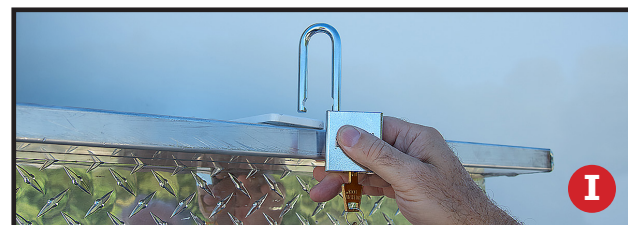
Insert the **Latching Pins** (2) into the two holes on the bottom ramp lip. Make sure Latching Pins extends through both the Ramp Lip and Base. See image **G**.

STEP 5

Rotate **Swivel Latches** (2) and align with holes in upper ramp lip. Insert **Latching Pins** (2) on both sides. Make sure Latching Pins extends through both the Swivel Latch and Ramp Lip. See image **H**.



OPTIONAL: For security purposes, the **Swivel Latch** and Holes in the top ramp lip are large enough to accommodate a padlock. See image **I**. Padlock **NOT** included.



ADA RAMP TRANSIT PREPARATION INSTRUCTIONS

COMPONENTS



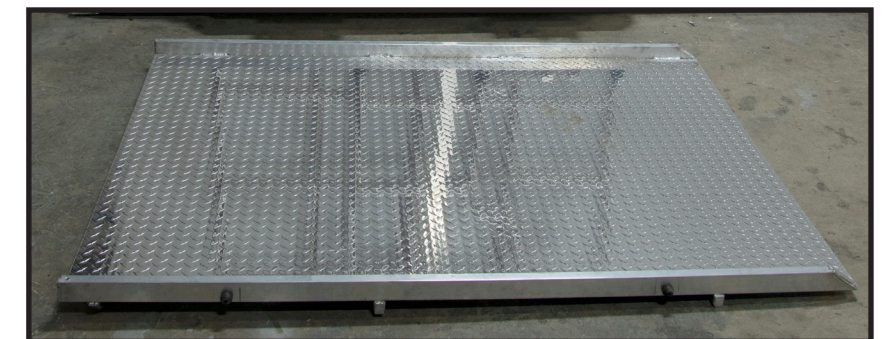
Long Railing (1)



Medium Railing (1)



Short Railing (1)



ADA Ramp (1)



IMPORTANT: Read all instructions thoroughly before proceeding. In no event shall American Cargo Group (manufacturer of UltraLav) be liable for any direct, indirect, punitive, incidental, special consequential damages, to property or life, whatsoever arising out of or connected with improperly stowed components, or the use or misuse of our products.

FOLLOW INSTRUCTIONS CAREFULLY. For questions, call (254) 495-2183 or email customer.service@ultralav.com

TRANSIT PREPARATION

LOCATION



Unloaded View

The transit location for the ADA Ramp Components is on the road side (toward the front) of the trailer. You will find two (2) Swivel Latches, one (1) Bumper pad, two (2) C-channel Guides, and a Base.



Base (Top View)



Base (Side View)

TRANSIT PREPARATION

LOCATION



Unloaded View

The transit location for the ADA Ramp Components is on the road side (toward the front) of the trailer. You will find two (2) Swivel Latches, one (1) Bumper pad, two (2) C-channel Guides, and a Base.

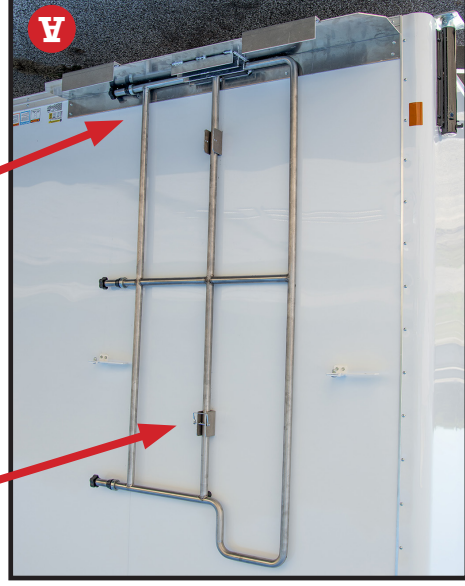


Base (Top View)



Base (Side View)

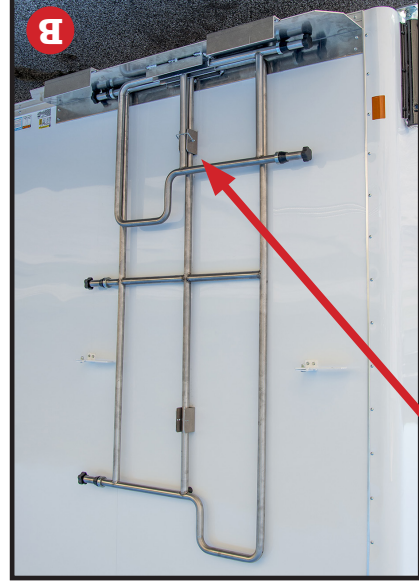
STEP 1



Place **Long Railing** (vertically) in the C-channel guide closest to the wall on the **Base**. Center tube fits into C-channel guides on the wall. Railing "feet" should face to the right/rear. Railing should lay flat against the trailer exterior wall. See image **A**.

For safety purposes, we recommend you fasten the latching pin, as shown, to prevent railing from falling during assembly.

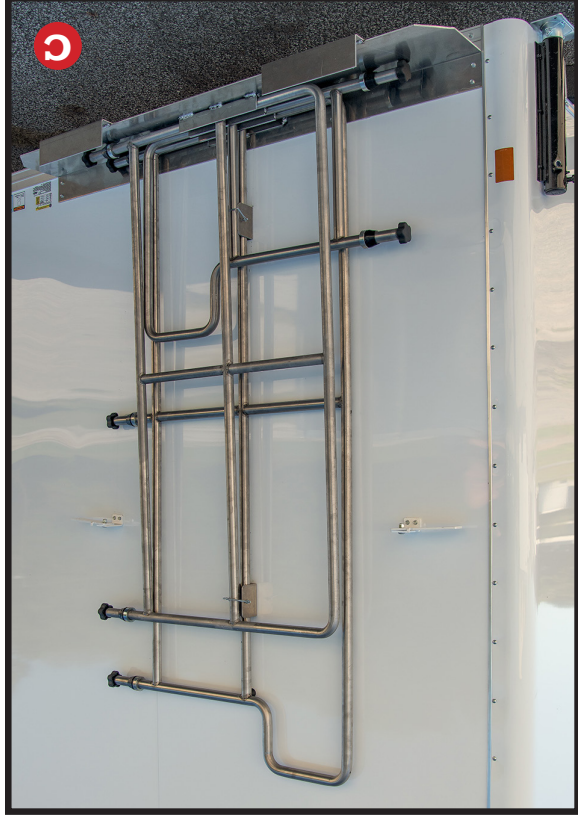
As you progress through the steps, you are working inside-to-outside. The Long Railing fits into the C-channel guide closest to the trailer.



Place **Short Railing** (horizontally) in the middle C-channel guide on the **Base**. Railing "feet" should face to the left/front. See image **B**.

STEP 2

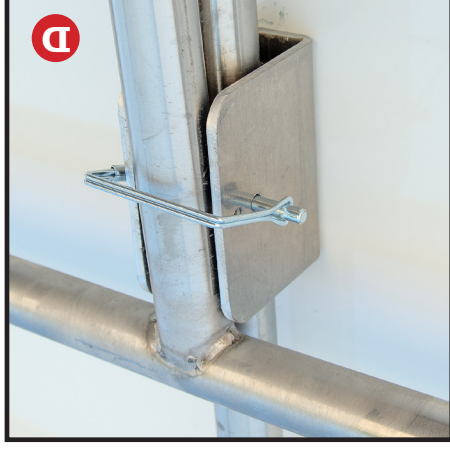
STEP 3



Place **Medium Railing** (vertically) in outermost C-channel guide on the **Base**. Railing "feet" should face right/rear. See image **C**.



IMPORTANT: Be sure **BOTH** the top and lower C-channel guides are secured with a Latching Pin. See images **D** & **E**.



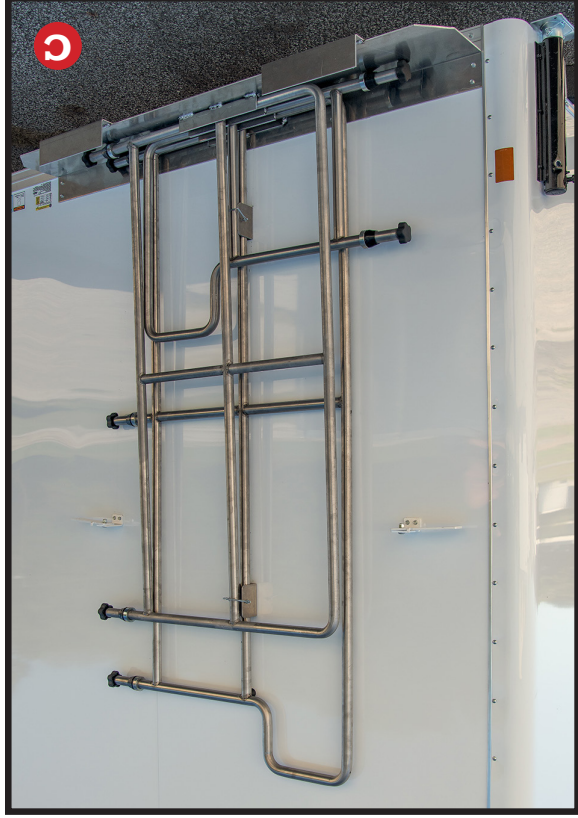
D



E

ASSEMBLY (continued)

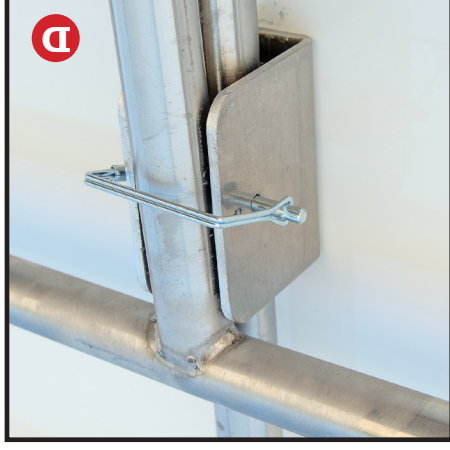
STEP 3



Place **Medium Railing** (vertically) in outermost C-channel guide on the **Base**. Railing "feet" should face right/rear. See image **C**.



IMPORTANT: Be sure **BOTH** the top and lower C-channel guides are secured with a Latching Pin. See images **D** & **E**.



D



E